



# JANUS CAM

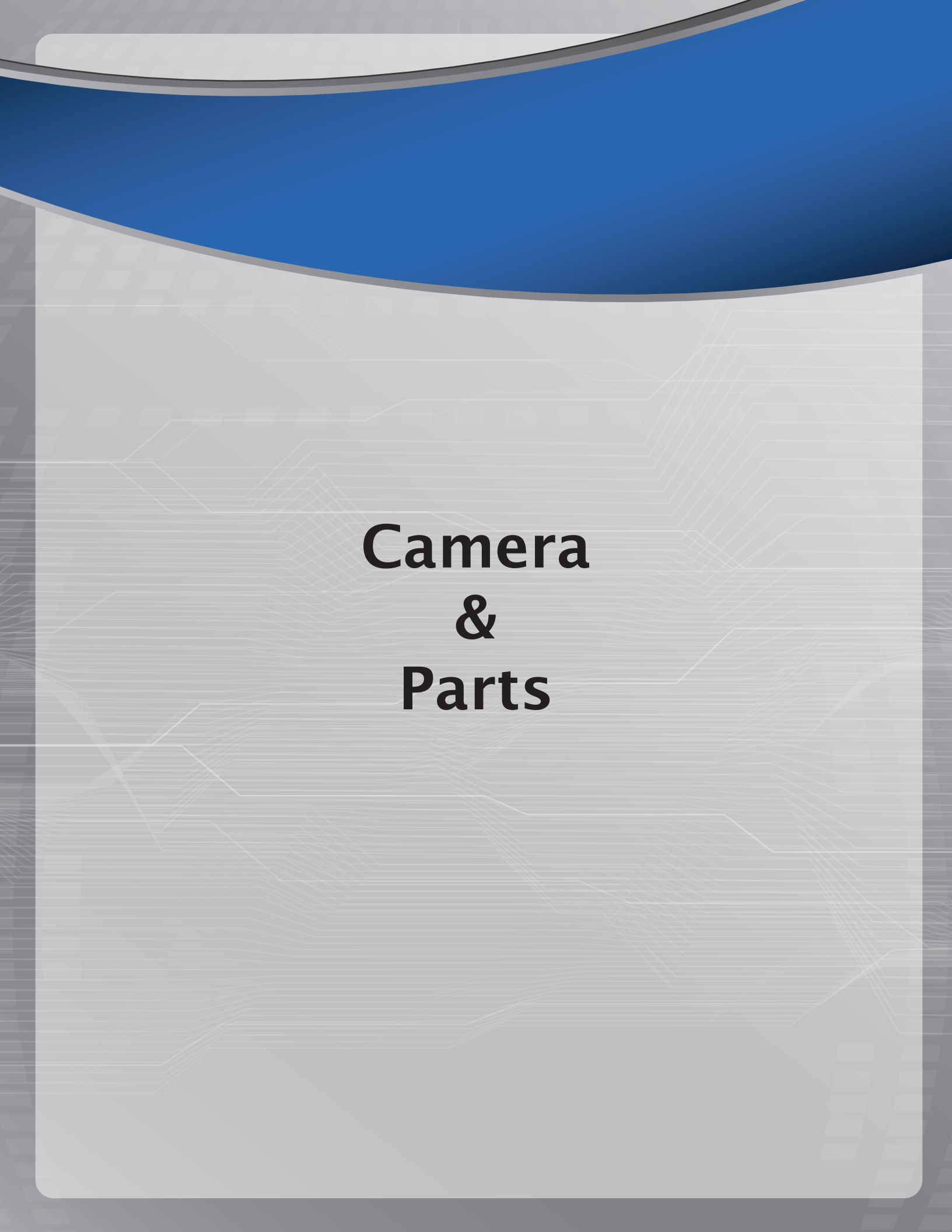


## Janus V2 HD Product Manual

# Table of Contents

|  |           |
|--|-----------|
| <b>Camera &amp; Parts</b>              | <b>1</b>  |
| <b>Assembly &amp; Installation</b>     | <b>3</b>  |
| <b>First Use &amp; Card Formatting</b> | <b>13</b> |
| <b>Settings &amp; Viewer Software</b>  | <b>14</b> |
| <b>WiFi Setup &amp; Janus Center</b>   | <b>18</b> |





# **Camera & Parts**







- 1** Security Bracket
- 2** Mount Arm
- 3** GPS Bracket
- 4** Power Cable
- 5** Emergency Button
- 6** WiFi Antenna



# **Assembly & Installation**

To begin assembly, you will need the camera, mount arm, GPS and long screw.



1

Align and attach the mount head to the GPS bracket as seen in the image below and use long screw to connect both pieces.







2

Slide the mount head vertically upwards into the back of the camera as pictured with arrow.



3

If you do not plan on using the security bracket, you may continue to page 8 step 6.

You will need the security bracket and short screw as seen in the image to the left.

4

Align the security bracket with the hole pointed out in the image, then insert the short screw and tighten.



5

Your result should look like this:





6

Insert the GPS bracket's plug into the port on top of the camera labeled GPS. Make sure it is plugged in all the way.



7

(If using with WIFI download)

With the camera facing you, attach the Wi-Fi antenna to the port located on the left hand side of the camera.



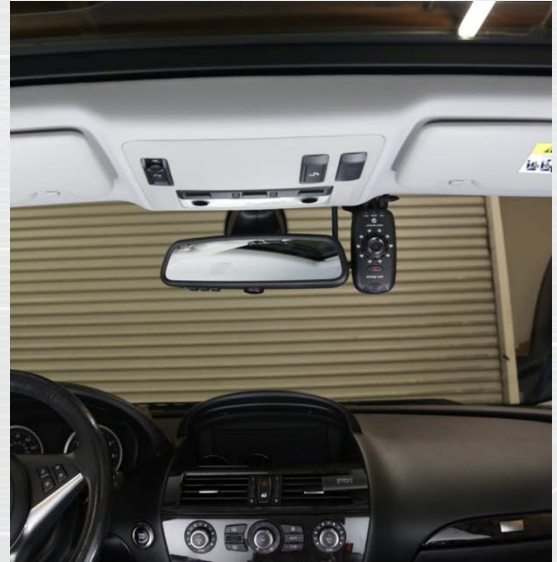
8

**DO NOT REMOVE THE 3M BACKING YET.** For optimal viewing, find the mount location that would allow for similar placement as pictured in the images.



9

Once you have found the location you would like to mount the camera to, peel off the red 3M backing from the GPS bracket and apply the assembled unit to that point, pressing it firmly against the windshield.







10

Locate the fuse box you will be running the power from. Take the power line out of the camera and begin to tuck it into the headliner in the direction of the fuse box. If you are using the backup reader, now is the time to connect

your external USB. Once the external device is connected, tuck it away in the opposite direction of where your power is coming from.



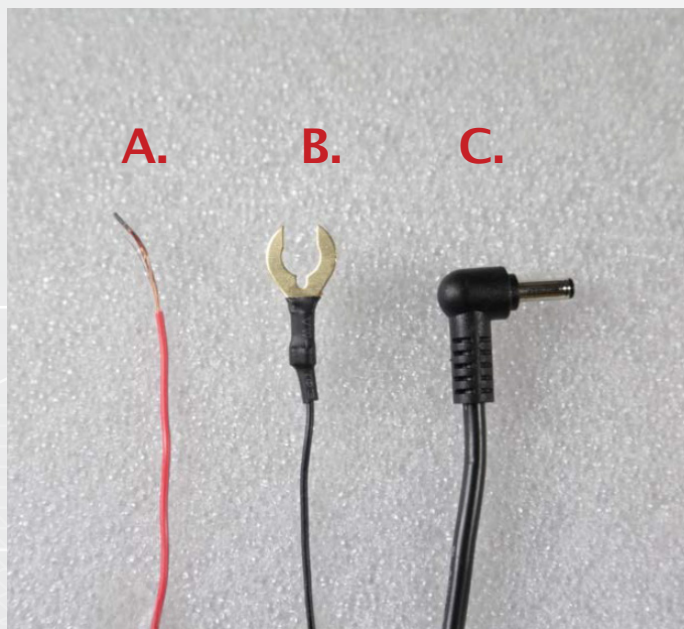
11

Begin to unravel the power cable



12

On one end you have the power wire (**A. red wire**) and the ground clip (**B. black with gold clip attached**). On the opposite end you have the (**male jack connector C.**). Strip 1/2 an inch of the protective sleeve off of the power wire (**A. red wire**)



13

Return to the vehicle and slowly from the top of the pillar pull the door seal away from the vehicle all the way to the bottom of the door exposing the interior of the pillar.





14

Place male jack close to female jack and leave some slack on both ends. Begin to tuck the wiring cable towards the fuse box going through the top of the support pillar. Once the end of the power cable with the power and ground wires

reaches the fuse box, reapply the door seal concealing the cable. Make sure to leave some slack on both ends to prevent disconnection on both ends.



15

With the fuse box panel exposed, find a constant power fuse that supplies at least 12 V (you will need a volt meter). Avoid sharing power with another device.

16

Remove the fuse you will be using from its location (remember the exact location it was sitting if there are empty fuse sockets in the cable box). Wrap the exposed section of the power wire (red wire) neatly around one of the teeth and place it back into the proper slot. Locate a proper place to connect the ground wire.

**IMPORTANT: For Hybrid vehicles, only use the cigarette power adapter. Do not tap into any fuse panel.**







17

Test power by connecting the female and male jacks and turning on the ignition. In the event the camera does not power on, recheck all connections. When the three lights on the camera light up, you can tuck the female and male jacks into the

headliner and begin to conceal the remaining exposed cable and wire around the fuse box with the zip ties provided.

**ONCE YOU HAVE PROPERLY ASSEMBLED THE CAMERA AND WIRING, YOU WILL NEXT NEED TO FORMAT THE SD CARD. FOLLOW THE BELOW STEPS ONCE SD CARD HAS BEEN FORMATTED AND INSERTED INTO THE CAMERA.**

1. Allow the camera to run for about 2 minutes until all the lights turn solid.

*(If the GPS continues to blink, this indicates that 1.) you are in an area where there is bad signal. Once in an area with good signal, the GPS light should stay solid or 2). the GPS is not properly connected.)*

2. Once all lights are solid, press the Emergency button located on the front camera (illustrated below), and the REC light should blink for a few seconds and then turn solid again.





# **First Use & Card Formatting**



# First Use & Card Formatting

Before your camera is ready to be used, it must be prepared. The following steps will guide you in preparing your SD.

## FORMATTING SD CARD WITH CAMERA

If you are using a new 32GB SD card or lower, insert SD card into camera while the camera is powered OFF. Once the SD is secured in the camera, you can then power it ON and a voice prompt will notify you that the SD is being formatted. This should take about 1 minute. Once formatting is complete, camera will beep once and all 3 lights should stay solid. Card is now formatted and ready for all configurations.

### \*USED SD cards:

*If you are using a SD card that has been used, you will first need to format the SD card. Follow directions below.*

## SD CARD SIZE:

- I. **32GB and lower:** You can either use the camera OR viewer software to format SD cards lower than 32GB.
  - Select the *Setup* icon on the bottom of the viewer software indicated with the cross wrench and hammer. Then select the fourth tab labeled *Removable Disk*. Under the *Select Drive* box, make sure to select the drive in which the SD card is in then press *Format Drive*. Your SD card will now have a folder labeled *config*.
- II. **Higher than a 32GB (64–128GB):** SD cards higher than 32GB will not format properly with the viewer software nor with the computer. Please contact a sales rep when using a 32GB SD card or higher. Special formatter required. (Example illustrated below)

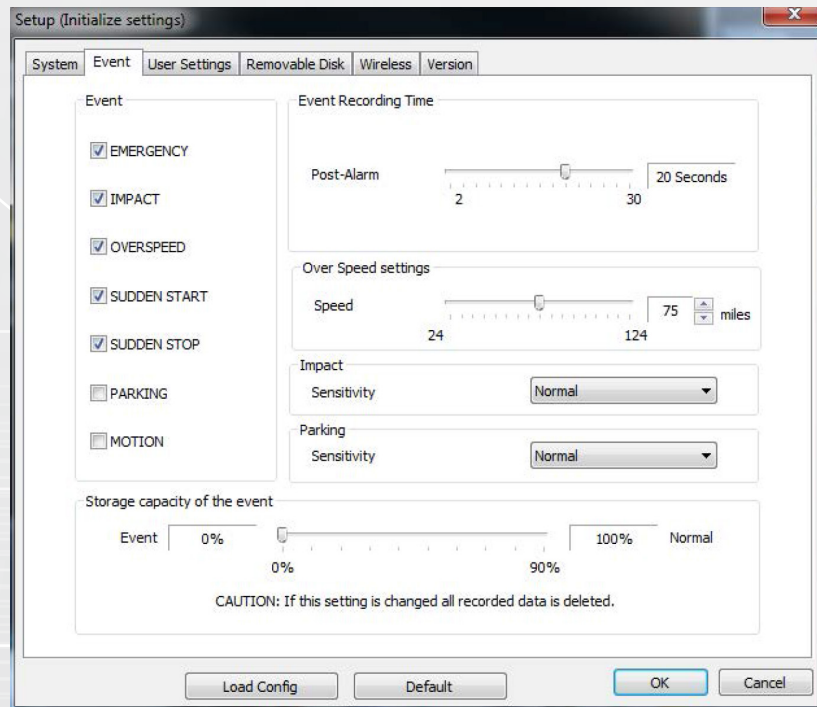
After your SD card has been formatted, you are ready to make your configurations.  
**NOTE:** Make sure after making your configuration changes, you are saving it in the SD card drive, in the *config* folder.





# **Settings & Viewer Software**

## Event Tab



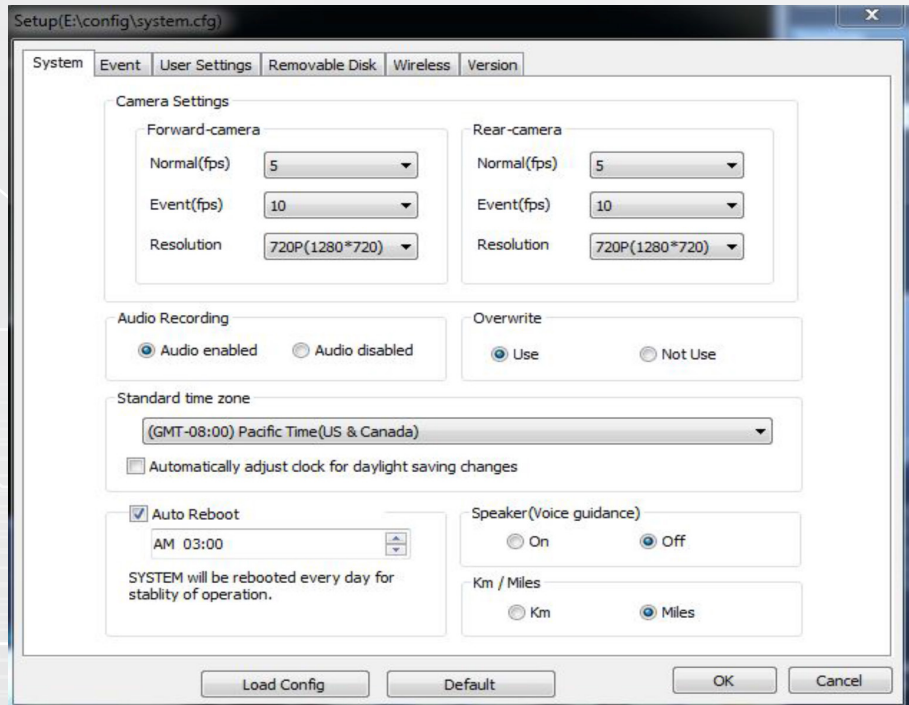
**Event**– In this section, you can select which types of driver events are captured and labeled accordingly in the video list.

**Post Alarm**–Duration after and event is triggered.

**Over-Speed Settings**– Select a speed limit to stamp for over-speeding

**Storage Capacity of Events:** It is HIGHLY recommend to set the **Event** at **0%** and **Normal** at **100%**. Otherwise, adjusting the percentages will create two folders storing the Normal and Event files separately.

# System Tab



**Camera Settings** – Here you can select the frames per second for your forward and rear facing viewing. Keep in mind, the higher the FPS, the more memory space.

**Audio Recording** – Here you can select whether you want the camera to record audio.

**Overwrite** – Here you can select whether you want the cameras to stop and overwrite recordings once the card is full.

**Standard Time Zone**– Make sure to select the correct time zone for your city. The GPS bracket must be properly connected in order for the camera to set your selected time zone.

**Auto Reboot** – Select the time in which you would like the camera to automatically reboot.

**Speaker (Voice Guidance)** – Here you can turn the voice guidance on or off. We would recommend it to be OFF because it can be distracting for the driver and the passenger.

**Km/Miles** – Choose to record your speed in kilometer or miles.



# User Settings Tab

The screenshot shows the 'User Settings' tab of a configuration window titled 'Setup(E:\config\system.cfg)'. The window has several tabs: 'System', 'Event', 'User Settings' (selected), 'Removable Disk', 'Wireless', and 'Version'. The 'User Settings' tab is divided into three main sections: 'Vehicle Info', 'User Info', and 'LBP' (Low Battery Protector). The 'Vehicle Info' section contains three text input fields: 'Vehicle Info' (filled with 'Janus Cam'), 'Driver Info' (filled with 'John Janus'), and 'License plate No' (filled with 'JanusCam1'). The 'User Info' section contains two text input fields: 'User ID' (filled with 'admin') and 'Password' (empty). The 'LBP' section is checked and contains two groups of radio buttons. The 'Power On' group has five options: 12.4V/24.4V, 12.7V/24.7V, 12.9V/24.9V (selected), 13.1V/25.1V, and 13.3V/25.3V. The 'Power Off' group has five options: 11.3V/23.3V, 11.5V/23.5V, 11.8V/23.8V (selected), 12V/24V, and 12.3V/24.3V. Below these sections is a 'Time set' section with a date and time input field showing '2014-06-04 AM 10:05'. At the bottom of the window are four buttons: 'Load Config', 'Default', 'OK', and 'Cancel'.

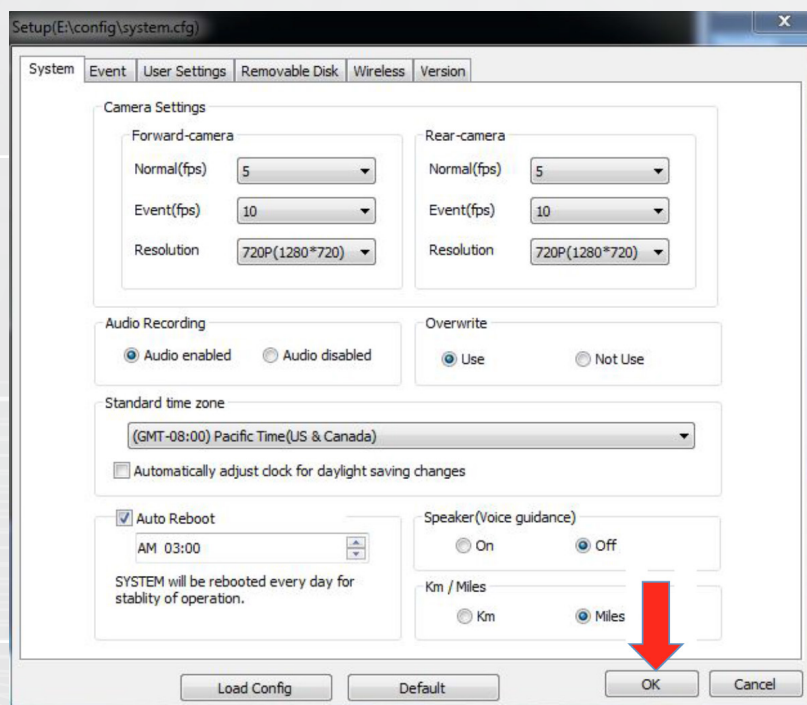
**Vehicle Info**– If applicable, please enter vehicle and driver information. This information will be stamped on the video.

**User Info**– If you would like to change the User ID and/or add a password to access the card, please enter the information here. P/W and ID are case sensitive.

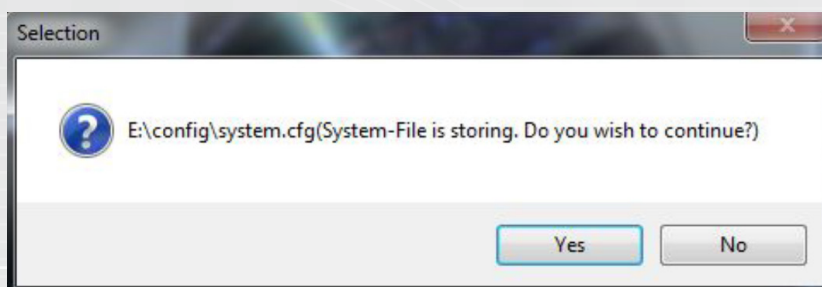
**LBP (Low Battery Protector):** Here you can set your voltage point to turn the camera on and off. Power ON/Power OFF must have minimum 1.3v difference.



Once you have completed all the changes you would like to make, click the OK button in the bottom right hand corner.



The window below will pop up, showing you where the configuration you have just created to be saved. Make sure the drive (in this case the E: drive) corresponds to the drive that your SD card is connected to. Click yes and the settings will be saved. Reinsert the SD card into the camera and power it on. Once the camera beeps once, the camera will now record in the configuration you had saved.





# **WiFi Setup & Janus Center**

The Janus V2 HD has the capability to transfer video data wirelessly to a computer. To begin Wi-Fi setup, remove the SD card from the camera. Connect the card to the computer that you want to receive the video data. This computer should have the Janus V2 HD viewer software as well as Vehicle List (Janus Center) Management Software installed.

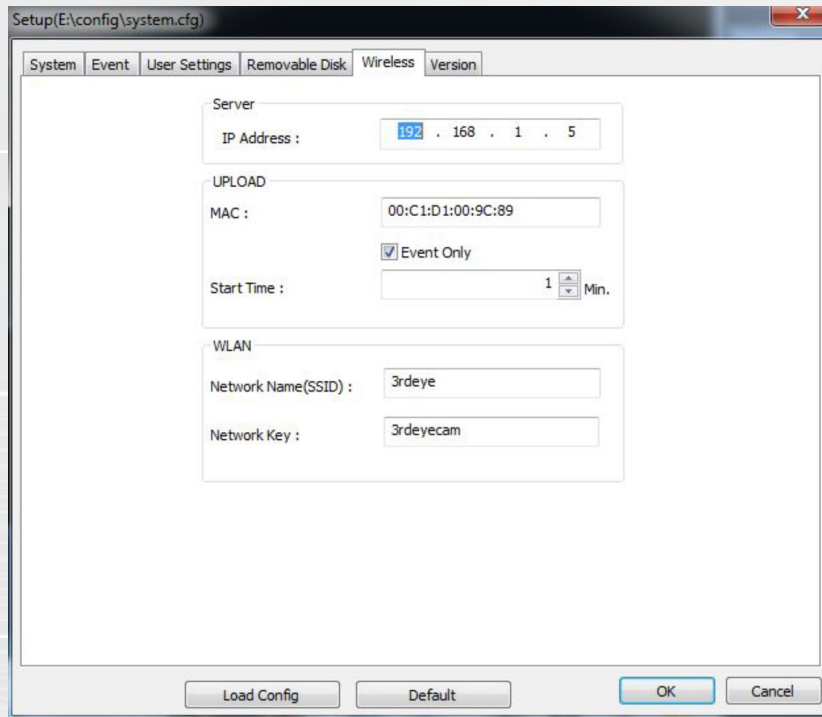
***The Janus Center software is sent upon request. Please contact a Janus Cam sales rep and request the software.***

Once the card is connected and recognized by the computer, open the viewer software.



Please click the setup icon highlighted by the arrow (crossed wrench and hammer).

# Navigate to the Wireless Tab



1. In the WLAN section, enter the name of the wireless connection you would like to use. If there is a password on the network enter it as well.
2. In the UPLOAD section, change the start time to the length of time you would like the camera to wait before initializing the wireless data transfer.  
**\*\*Note: The camera has an approximately 3 minute time frame from when the camera is initiating and data transfer is allowed to initialize.**

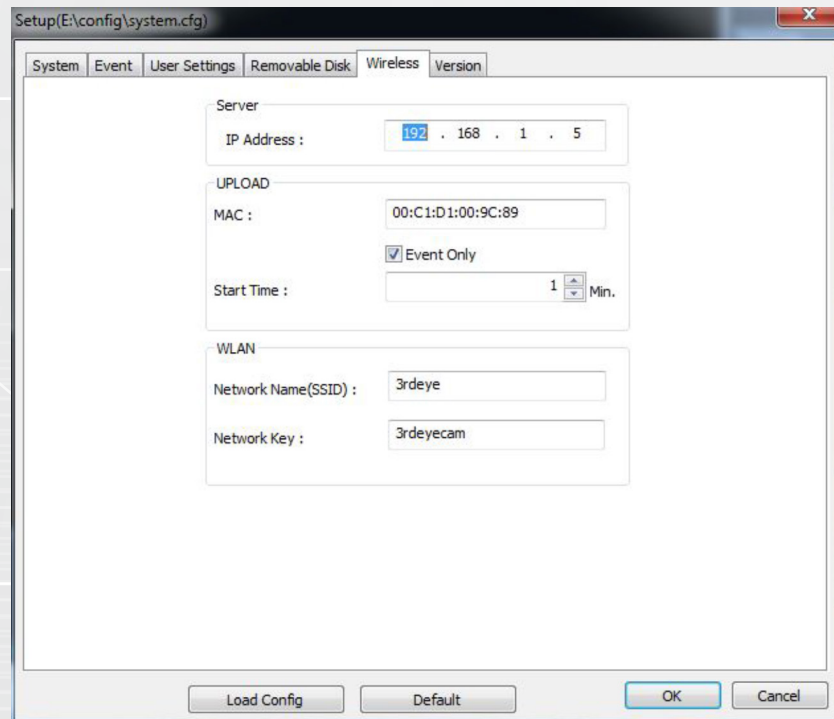
Checking the box for “**Event Only**” means you are only going to wirelessly receive Event categorized videos (pg. 21).

**\*\*Recommended setting\*\***

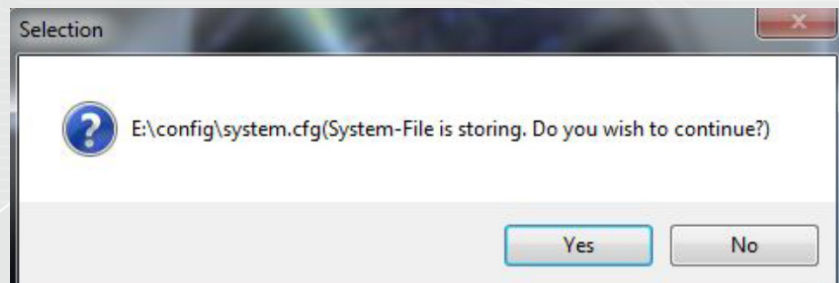
Leaving the “**Event Only**” box unchecked means you will download ALL videos from the cameras.



In the server section of the wireless tab, you will enter the wireless IP address of the computer. Once you have entered all the information press OK in the bottom right hand corner.

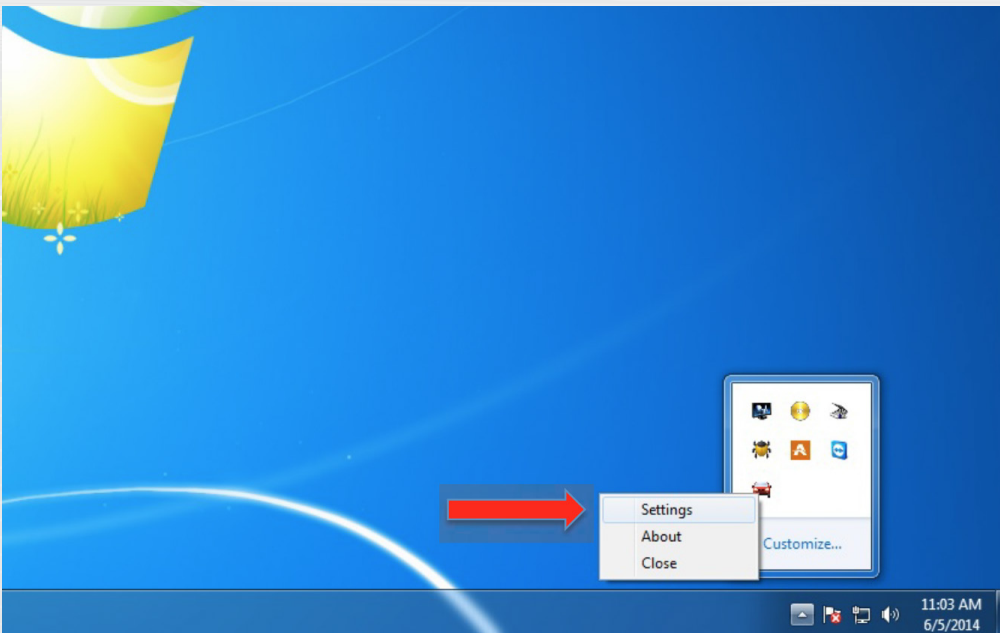
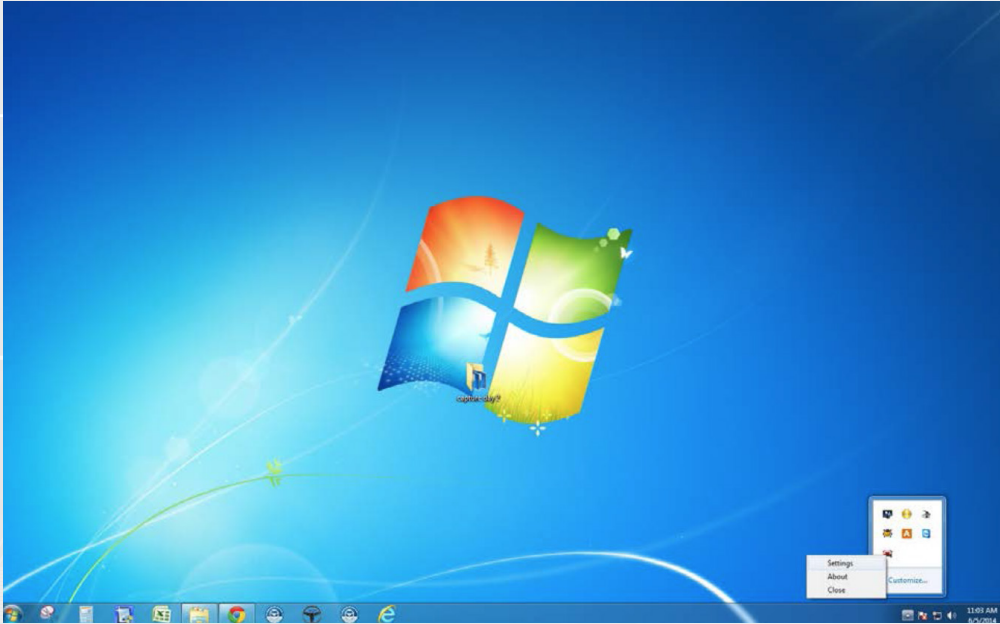


Make sure the drive (in this case the E: drive) corresponds to the drive that your SD card is connected to. Click yes and the settings will be saved. If you have Janus Center installed already you can reinsert the SD card into the camera and power it on. The camera is now setup for wireless video transfer.



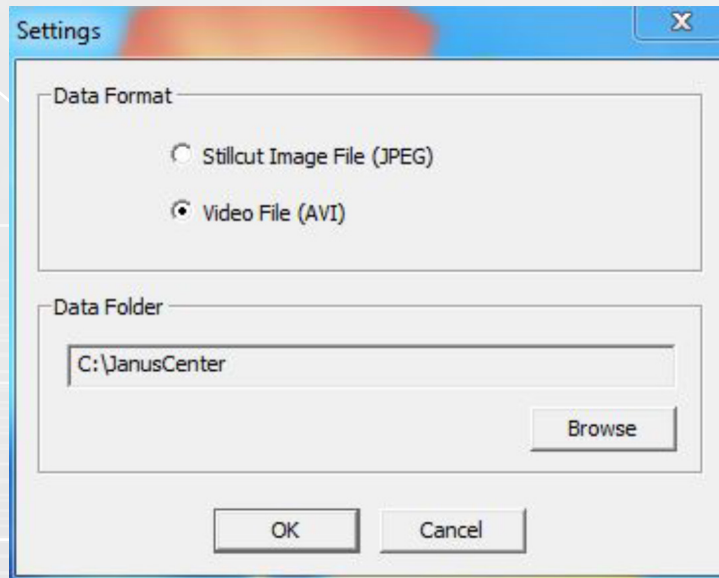


In the lower right hand corner of the screen, click on your system tray (up arrow). Right click Janus Center (red car) and click on settings.



**Data Format**– Select whether you want pictures or video files to be transferred.

**Data Folder**– Location of where the video files will be transferred to.

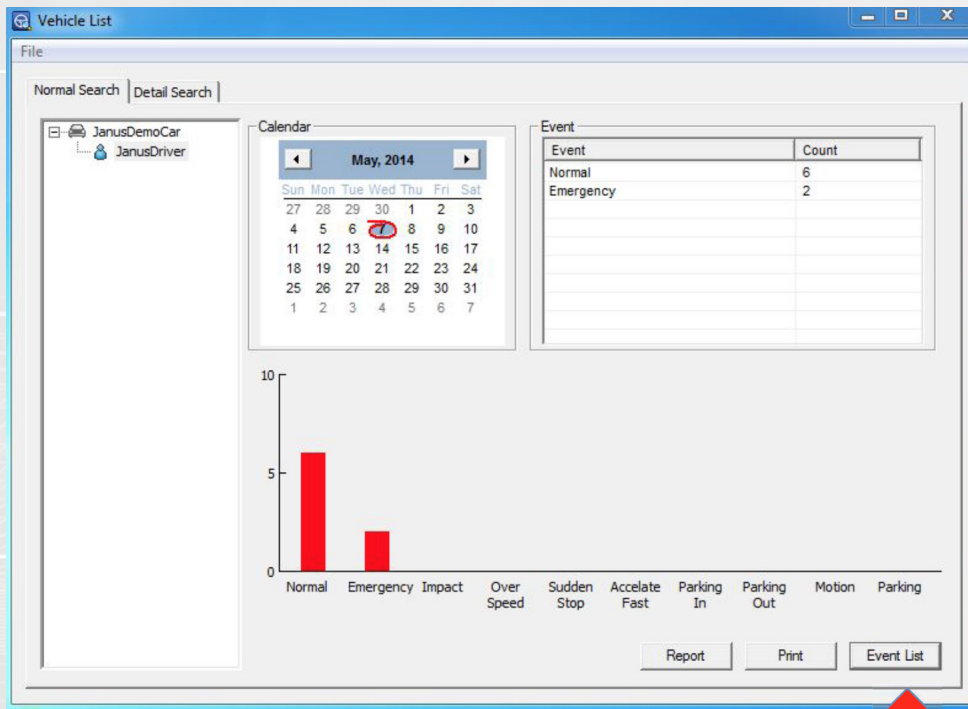


Once you have configured your settings, **Press OK.**

**Initiate Data Transfer** – Select the icon illustrated below labeled “Janus Center” to initiate wifi data transfer.



# Vehicle List (Janus Center)



Here is where you can view the videos or images that have been transferred to the computer. To find a particular video, select the vehicle, driver, and date. Click Event List in the bottom right hand corner highlighted by the arrow.

The Event List window below allows you to quickly access video data just like the Janus V2 HD with less detail in information.

**NOTE: Audio can only be heard when viewing the outside view, not the inside view.**

[illegible]





# JANUS CAM

**[www.januscam.com](http://www.januscam.com)**

31 Airport Blvd Suite G3, South San Francisco Ca 94080 *Office* (650) 871-869 *Fax* (650)871-5914